



MONTHLY MEMBERSHIP PROGRESS REPORT

District 132

Results as of: 04/30/2019

GMT: MIKLOS HORVATH

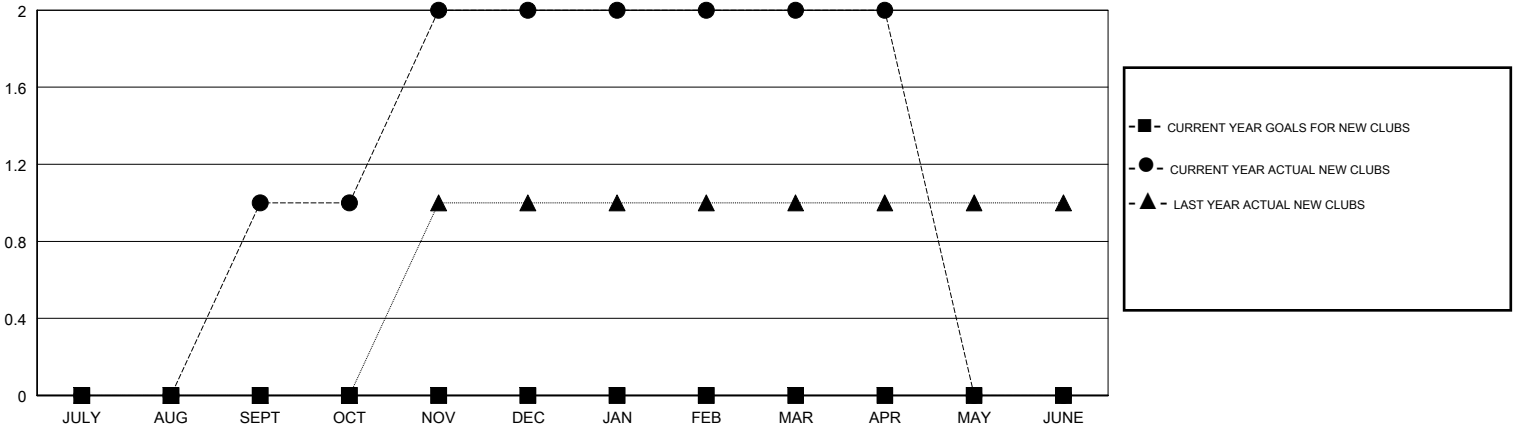
LOCATION MACEDONIA (FYROM)

GMT CA

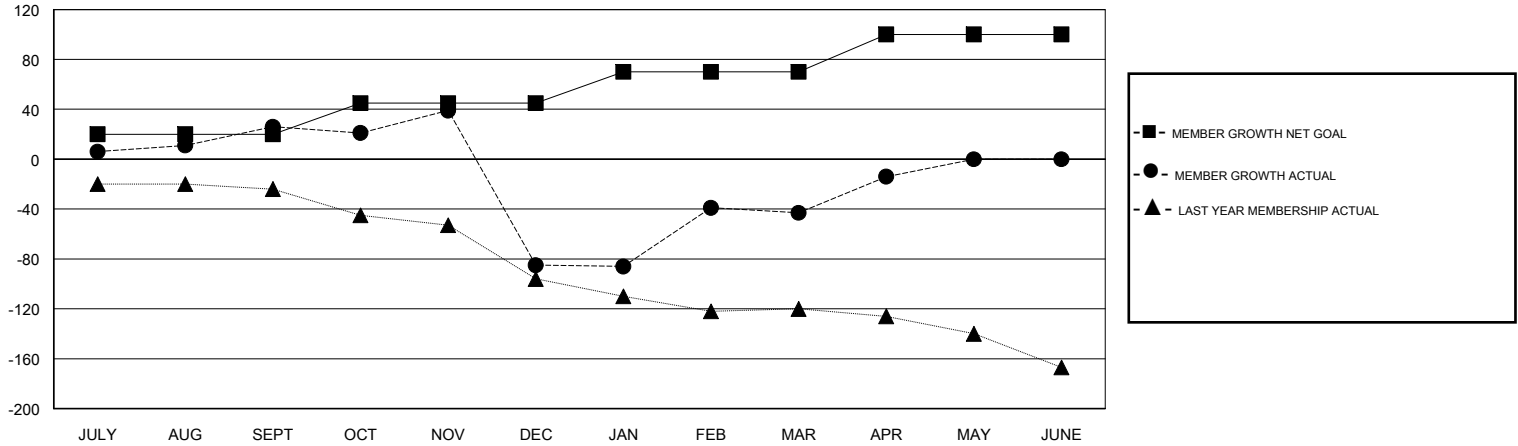
Clubs			
RESULTS FOR 2018-2019			
QUARTER	NEW CLUB GOAL	NEW CLUBS	DROPPED CLUBS
JULY/AUG/SEPT	0	1	0
OCT/NOV/DEC	0	1	5
JAN/FEB/MAR	0	0	0
APR/MAY/JUNE	0	0	0

Members			
RESULTS FOR 2018-2019			
QUARTER	MEMBER GROWTH NET GOAL	MEMBER GROWTH ACTUAL	DROPPED MEMBERS ACTUAL (including transfers)
JULY/AUG/SEPT	20	35	7
OCT/NOV/DEC	25	30	141
JAN/FEB/MAR	25	67	12
APR/MAY/JUNE	30	36	7

GOALS AND ACTUAL NEW CLUBS CUMULATIVE



GOALS AND ACTUAL MEMBERS CUMULATIVE



DROPPED CLUBS: 5	20 CLUBS OF 47 ADDED 1 OR MORE NEW MEMBERS	<u>GENDER DISTRIBUTION</u> MALE 492 (55.97%) FEMALE 387 (44.03%) Women Percentage Fiscal Year Goal: 0%
<u>DROPPED MEMBERS</u> DECEASED 0 CLUB CANCELLED 98 OTHER 69 TOTAL 167	CLICK HERE FOR CUMULATIVE MEMBERSHIP DATA	TOTAL FAMILY UNIT MEMBERS 106 FAMILY MEMBERS PAYING HALF DUES 56